

CLASS VIVALDI'S SUPER MATHS LESSONS
THURSDAY 2nd APRIL

INTRODUCE ANGLES

Good morning- carrying on our work with angles today. You should be able to have a good go at most of these. If there is anything you are unsure on, google it and you should get the right answer. If you can remember that a right angle is 90 degrees which is also a quarter turn, you should be able to work the rest out.

Have a look through the questions on this powerpoint (you don't need to solve them in your maths books but may if you wish to). The answers are included in the powepoint so you can check if you are correct .

Once you are confident, move on to the maths activities page and solve a fluency and reasoning for walking, jogging or running in your maths book. If you want an extra challenge, try the sprinting problems.

Noah, Lottie and Emily J, pick one of your activity booklets and complete 2 pages.

MAKE SURE YOU MARK FRIDAY'S WORK- ANSWERS ARE ON THE VIVALDI PAGE OF THE WEBSITE!

Introduce Angles

Introduction

You are a robot who has been programmed to draw shapes.
Follow the directions to draw a shape.

[start at point A]

Move straight ahead 5 centimetres.

[turn 45 degrees clockwise]

Move straight ahead 5 centimetres.

[turn 90 degrees clockwise]

Move straight ahead 5 centimetres.

[move 45 degrees clockwise]

Move straight ahead 5 centimetres.

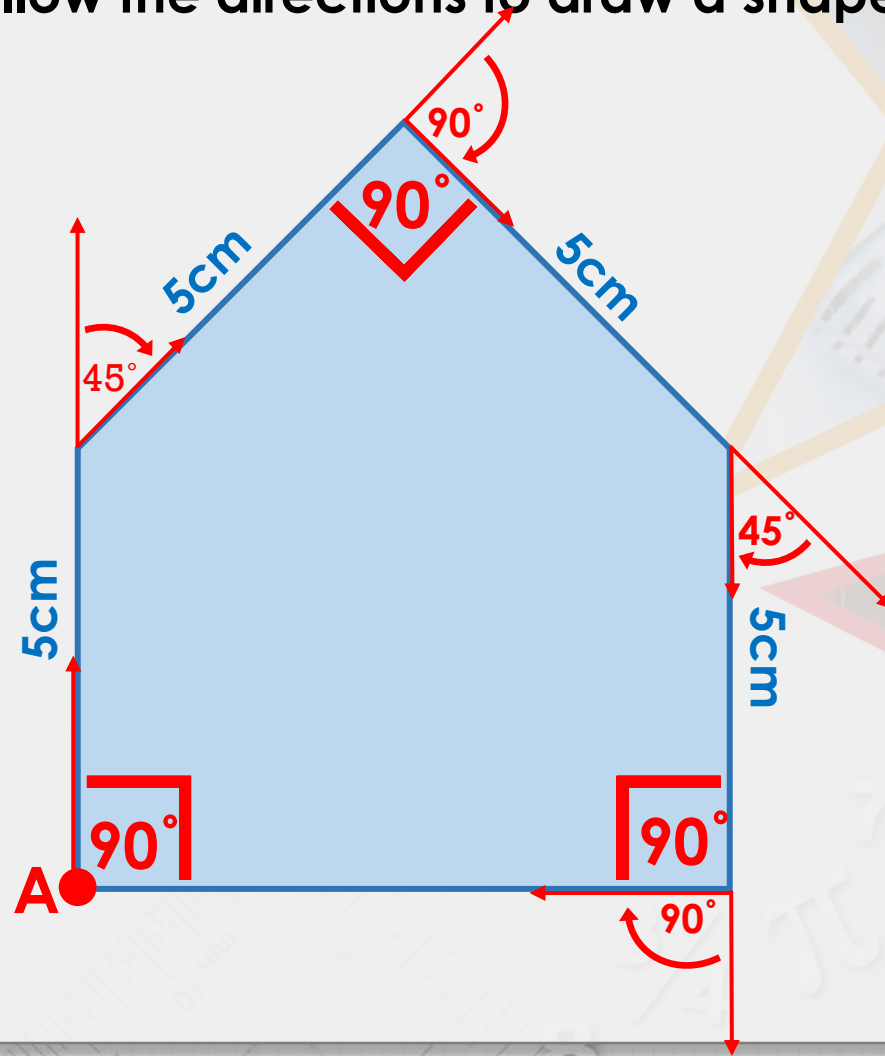
[move 90 degrees clockwise]

Move straight ahead to end at Point A.

[end at point A]

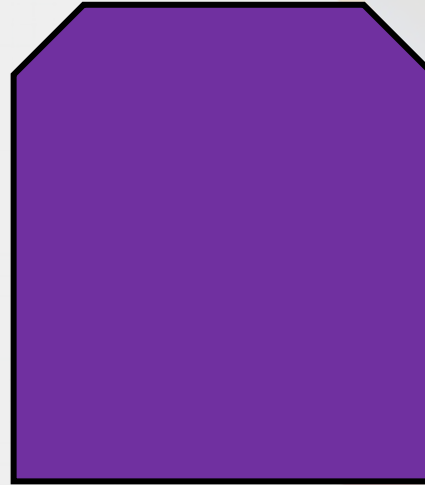
Introduction

You are a robot who has been programmed to draw shapes.
Follow the directions to draw a shape.



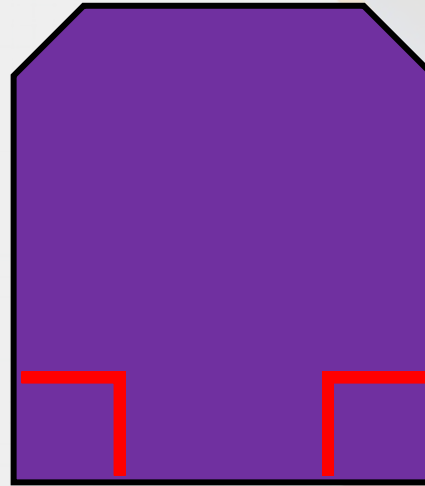
Varied Fluency 1

How many right angles are in these shapes?



Varied Fluency 1

How many right angles are in these shapes?



3

Varied Fluency 2

Complete this table.

Angle	Degrees	Amount of Turn
Right angle	90°	Quarter turn
Straight line		Half turn
	270°	Three-quarter turn

Varied Fluency 2

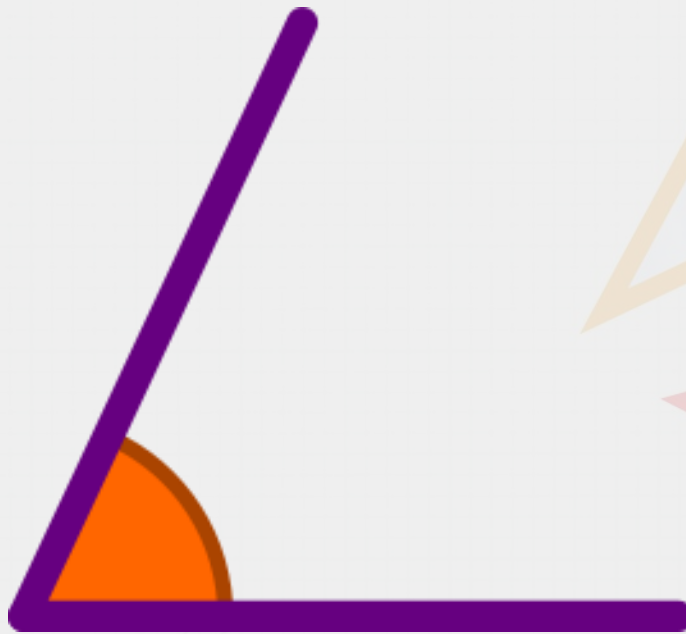
Complete this table.

Angle	Degrees	Amount of Turn
Right angle	90°	Quarter turn
Straight line	180°	Half turn
Three right angles	270°	Three-quarter turn

Varied Fluency 3

True or false?

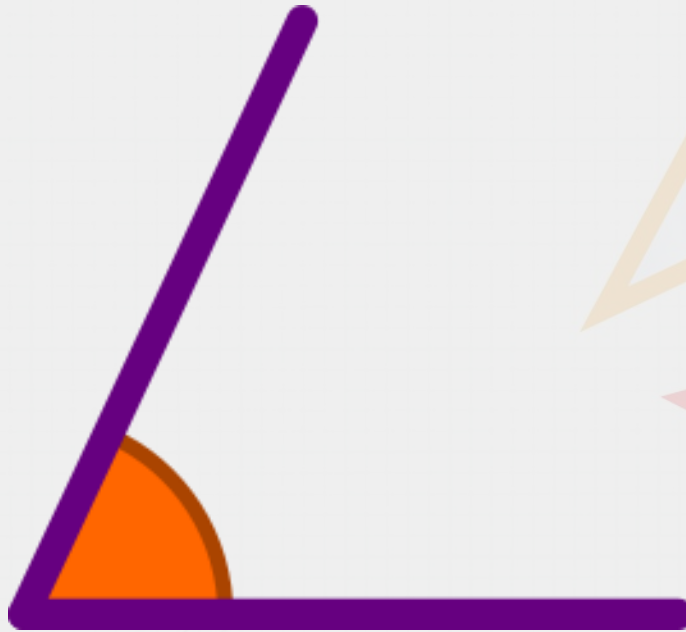
This angle is approximately 140° .



Varied Fluency 3

True or false?

This angle is approximately 140° .



False. It is approximately 65° .

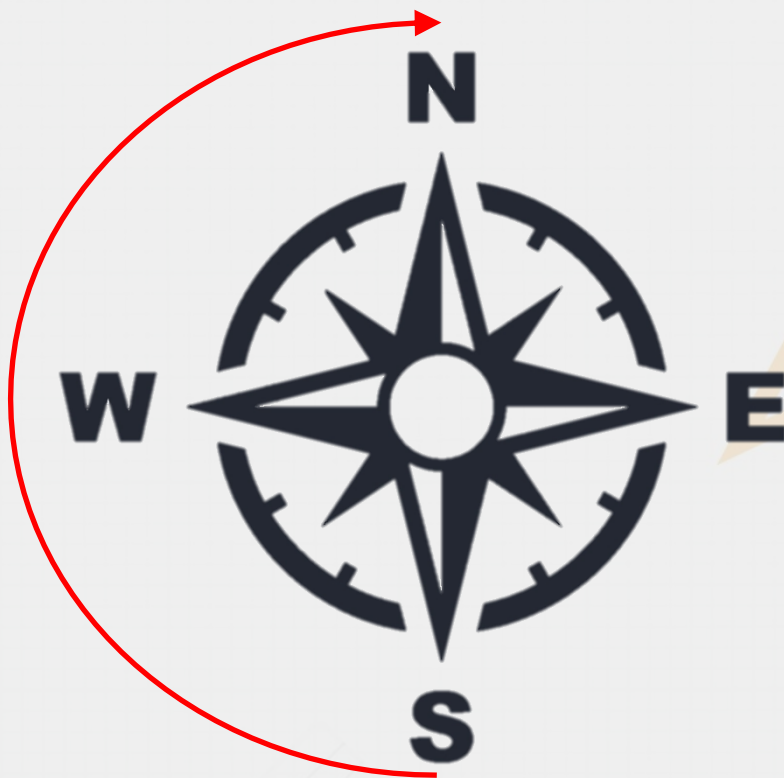
Varied Fluency 4

If you are standing facing south and turn 180° clockwise, which direction will you be facing?



Varied Fluency 4

If you are standing facing south and turn 180° clockwise, which direction will you be facing?



North

Reasoning 1

Which is the odd one out?

three-quarter turn



120°

Explain your answer.

Reasoning 1

Which is the odd one out?

three-quarter turn



120°

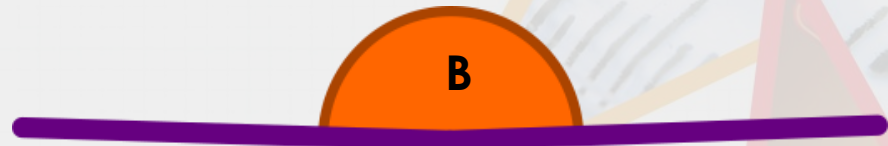
Explain your answer.

Three-quarter turn because...

Reasoning 1

Which is the odd one out?

three-quarter turn



120°

Explain your answer.

Three-quarter turn because the others represent angles less than 180°.

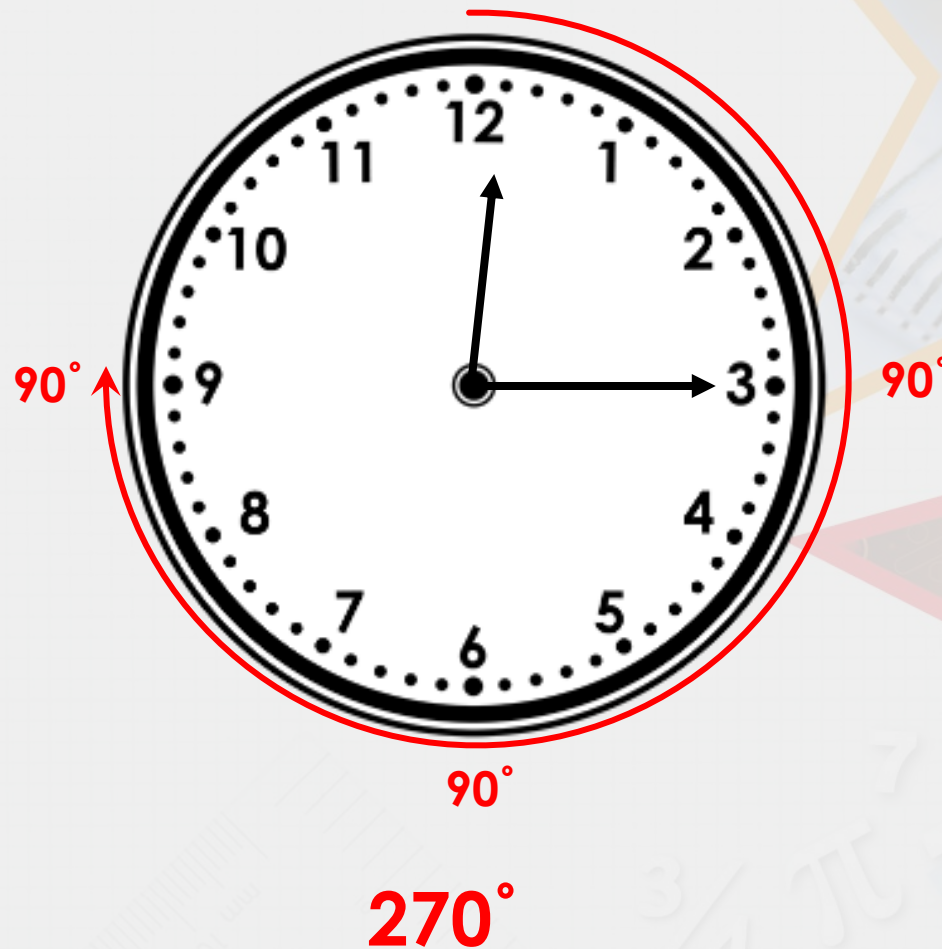
Problem Solving 1

The clock starts at 12:15. How many degrees has the minute hand moved to get to 13:00?



Problem Solving 1

The clock starts at 12:15. How many degrees has the minute hand moved to get to 13:00?



Problem Solving 2

You are at the lion facing west. If you turn 180° clockwise which animal would you be facing?



Problem Solving 2

You are at the lion facing west. If you turn 180° clockwise which animal would you be facing?



cheetah